

GLOWLINE SERIES

LED NEON FLEX 1212

OTSEN GLOWLINE NEON FLEX 1212

The OTSEN GLOWLINE Neon Strip is a high-performance flexible lighting solution designed for architectural and decorative applications. With a dimension of 12x12mm, it operates at 15W per meter and features 120 LEDs per meter, offering bright and uniform illumination. It runs on 24V DC and is designed with 6 LEDs per cut for precise length customization. Built with a 3oz thick copper PCB, the strip ensures superior thermal management and durability. With a CRI of 90, it delivers excellent color rendering, making it ideal for both indoor and outdoor environments. The GLOWLINE offers a horizontal bending orientation and a 120° beam angle, providing smooth light distribution. It is rated IP67 for water and dust resistance and is also UV-resistant, ensuring long-term outdoor performance. The strip supports multiple control modes, including ON/OFF, DALI, Phase-Cut, and 0/1–10V dimming, offering versatile integration into various lighting control systems.

Application Areas

- Facade Lighting
- Landscape Lighting
- Hospitality Spaces
- Retail Interiors
- Residential Projects



Product Features

- 15W/m power with 120 LEDs/m for bright, uniform illumination
- High CRI >90 for excellent color rendering
- Flexible horizontal bending with 120° beam angle
- IP67 waterproof and UV-resistant for outdoor durability
- Multiple control modes: ON/OFF, DALI, Phase-Cut, 0/1–10V
- 30z thick copper PCB for enhanced heat dissipation and longevity
- 2700-6500K & RGBW color temperature options.

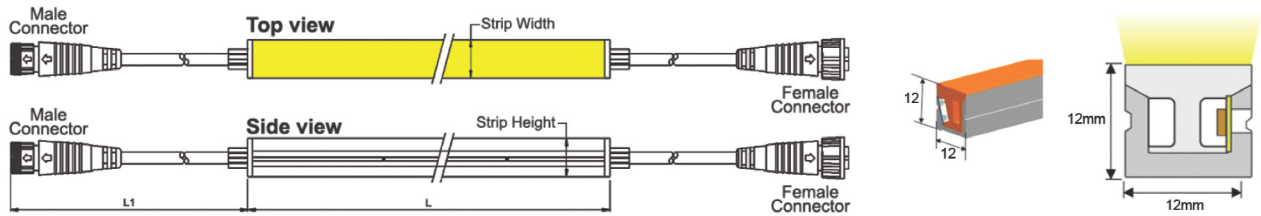
Product & Information

Product Data	Model Number	OT-GL-NEON-1212
	Model Name	OTSEN GLOWLINE NEON FLEX
	Wattage	8W, 10W, 12W, 15W /Mtr.
	Product Style	Neon Flex
	Length / Reel	5M/10M
	Cutting Length	6 LED per cut
Technical Data	Input Wattage	DC 24V
	Lighting Source	2835
	Luminous	100 Lumen/Watt
	Color Temperature	6500K, 5000K, 4000K, 3000K
	Color Rendering Index	Ra>90
	Safety Class	Class I
	Power Factor	0.95
	Type of Protection	IP 67
	Warranty	5 Years
	Life span	50000 hrs.
	IK Rating	IK08

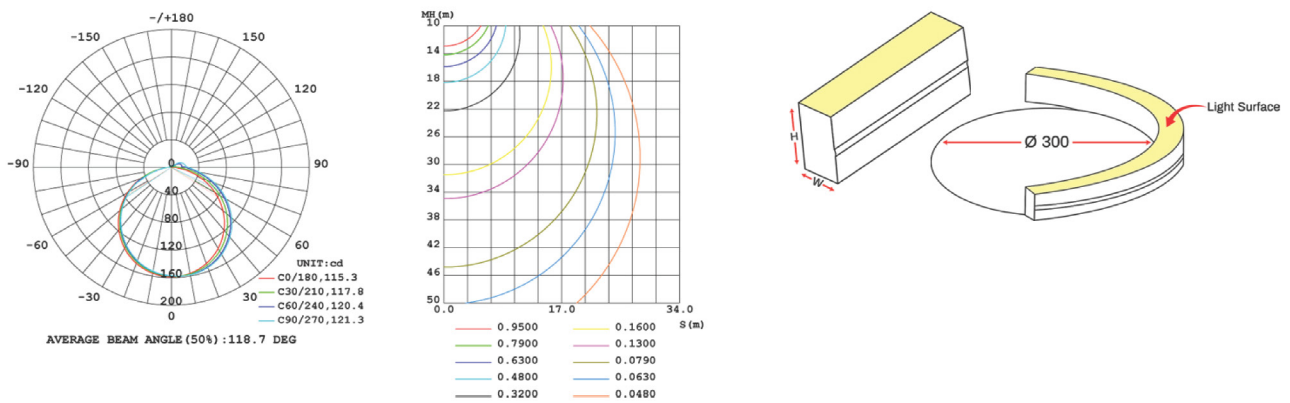
Wattage and Lumens

Item No.	LED	Lumens	Wattage	CCT	CRI
OT-GL-NEON-1212 8W	2835	100LM/W	8W	2700-6500K RGB RGBW	≥90
OT-GL-NEON-1212 10W	2835	100LM/W	10W	2700-6500K RGB RGBW	≥90
OT-GL-NEON-1212 12W	2835	100LM/W	12W	2700-6500K RGB RGBW	≥90
OT-GL-NEON-1212 15W	2835	100LM/W	15W	2700-6500K RGB RGBW	≥90

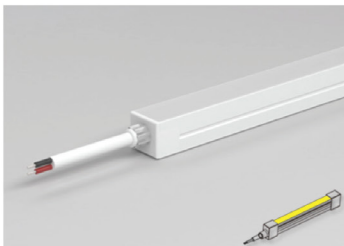
Product Dimension



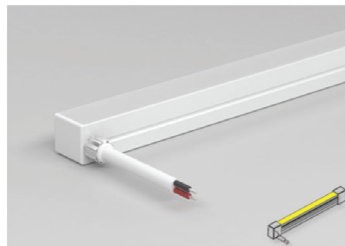
Light Distribution



Wire at end



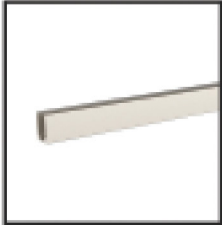
Wire at side



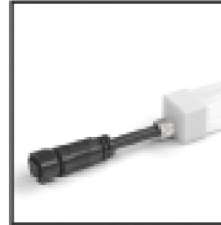
Wire at bottom



Accessories



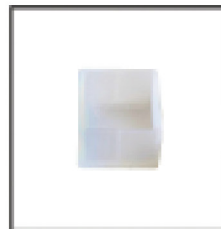
Aluminium Profile
Dimension : L1000xW14xH14.5mm
Material : Aluminium
Color : Silver



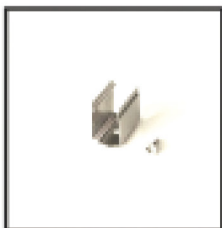
End Cap 2PIN
Color :White
Cable entry : front/side/bottom
Picture : front



Curved profile
Dimension : L100xW13xH9mm
Material : Stainless steel
Colour : Silver



Closed End Cap
Material : Silicone
Color : white



Mounting Clips
Dimension : L30xW14xH14.5mm
Material : Stainless steel
Color : Silver
Each meter led strips needs
2 clips + 2 Screws



IP67 T Type Connector
Wire Gauge : 0.326mm²/22AWG
Protection : IP67 (Mated)



IP67 Connector 2PIN
Wire Gauge : 0.326mm²/22AWG
Protection : IP67 (Mated)
Connector type : Male

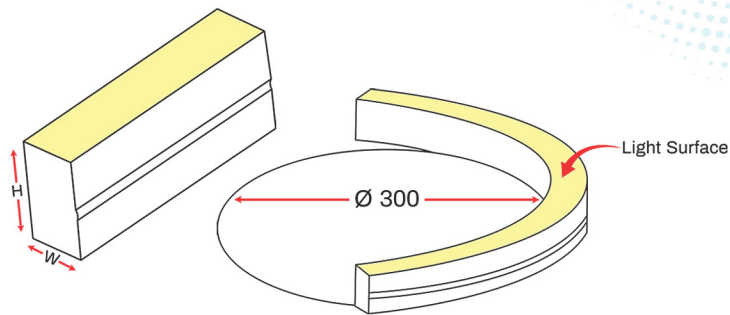


Scissor
Order Code : 8701212-09



IP67 Connector 2PIN
Wire Gauge : 0.326mm²/22AWG
Protection : IP67 (Mated)
Connector type : Female





Pre-Installation Check

Before beginning the installation, please light up the fixture for a quick test to ensure it is functioning correctly. This step helps avoid delays or complications after the fixture has been mounted.

Bending Instructions

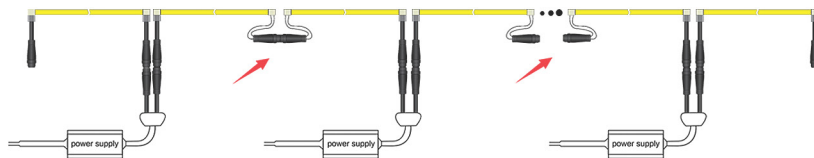
The SCUBA WHITE 1212 has a minimum bending diameter of 300mm. Do not bend the fixture in the upward direction, bend it too sharply, or twist it. Improper bending or twisting can damage the internal PCB, resulting in the fixture not working.

Installation Procedure

During installation, make sure that at least two workers are present to handle the fixture safely. It is essential to strictly follow the installation instructions provided in the manual to ensure proper setup and avoid any product damage or safety risks.

Warranty Statement

All LED lights are warranted to be free from defects in the product itself for a period of five (5) years from the date of purchase. This warranty covers only manufacturing defects. It does not cover failures caused by abuse, misuse, improper handling, negligence, acts of nature, accidental damage, unauthorized repairs, or incorrect voltage conditions.



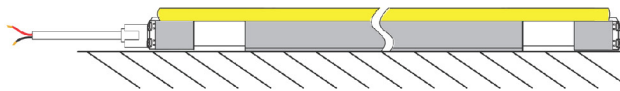
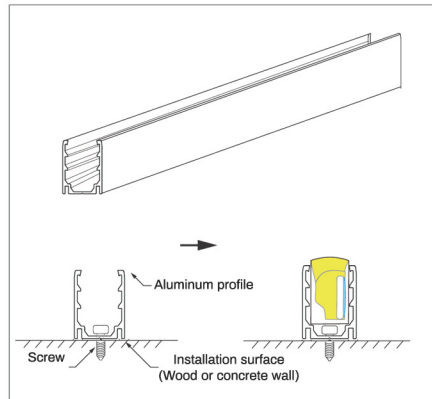
Note :

- 8W/M Max, 10mtr run length to single side feed.
- 12W/M Max, 10mtr run length to single side feed.
- 15W/M Max, 10mtr run length to single side feed.

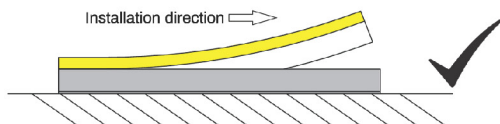
-The given data are typical values due to the tolerances of the production process and the electrical components, values for light output and electrical power can vary up to 5%



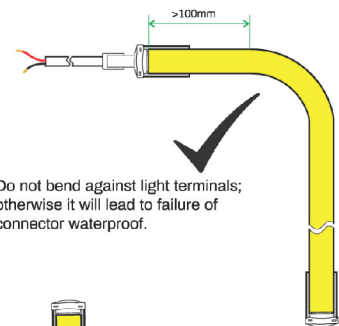
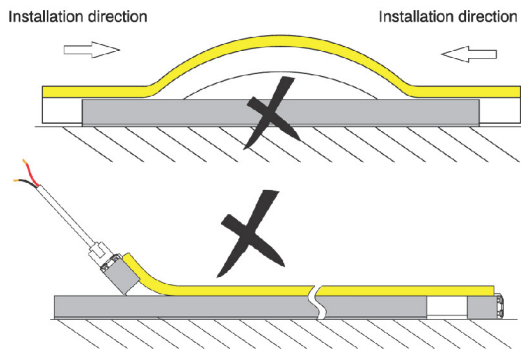
Installation Manual



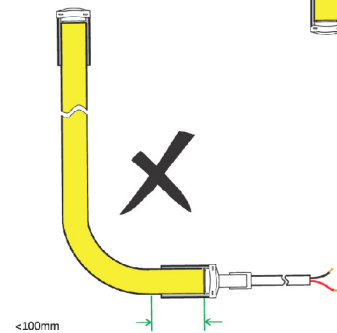
Press the flex light into mounted aluminum channel in one direction.



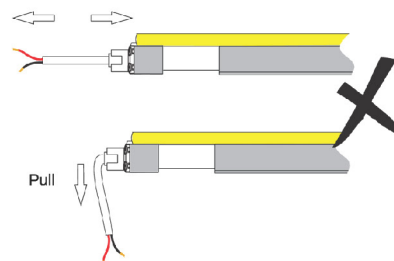
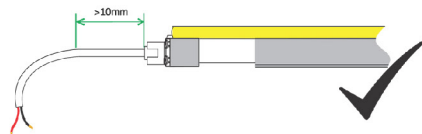
Incorrect installation like below picture could lead to light failure.



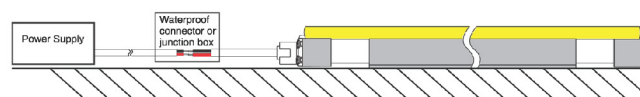
Do not bend against light terminals; otherwise it will lead to failure of connector waterproof.



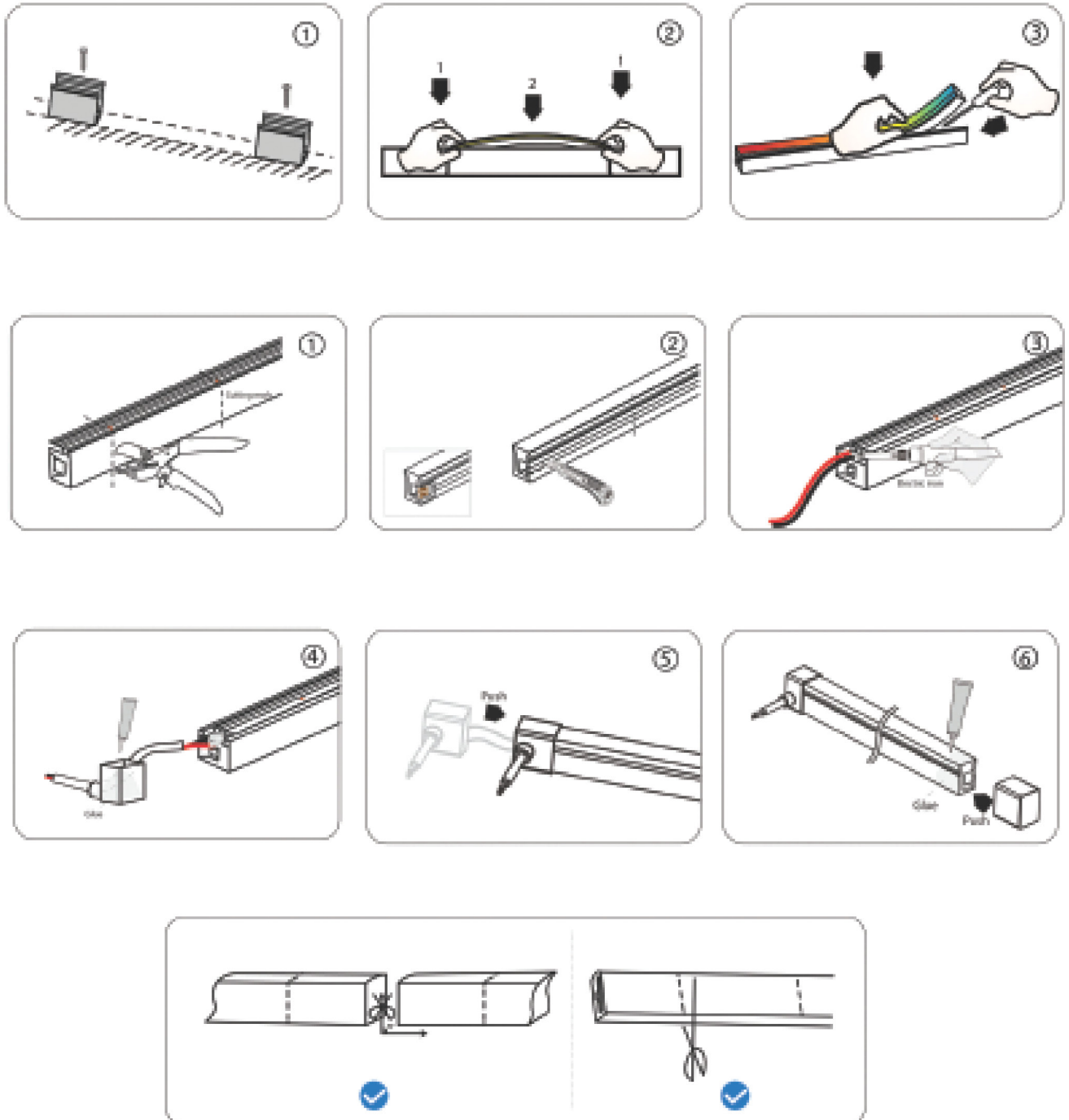
Ensure the feeding cable not bear force, keep the head 10mm in natural loose.



Mount the cable junction in hermetic enclosure like waterproof junction box in outdoor application.



Installation Manual





© 2023 OTSEN UK PVT. LTD. all rights reserved. OTSEN reserves the right to make changes in specifications and / or to discontinue any product at any time without notice or obligation and will not be liable for any consequences resulting from the use of this publication.

www.otsen.co.uk